



Christway
College



Secondary Handbook 2024

Contents

Welcome to Christway College	1
Five Foundations for a Whole Child	2
Vision and Mission.....	3
College Strategic Priorities.....	4
Student Life A-Z.....	5
Looking Ahead To Christway College	11
Transition Program for New Students	11
Orientation Day For New Students	11
Testing Day For New Students.....	11
Teaching And Learning	12
Learning at Christway College.....	13
Learning Support	14
> Learning Support.....	14
> Learning Assistants	14
> Personalised Learning Plans (PLP)	14
Australian Curriculum.....	15
Subject Allocation	16
Curriculum Pathways.....	17
Schoolbox.....	20
Reporting	20
Year 7 to 9 Device Program	21
> One to One Devices.....	21
> Warranty.....	21
The Vision for Year 9 Students.....	22
The Year Ahead.....	23
Extra-curricular Opportunities	25
> Student Leadership.....	25
> Music.....	25
> Competitive Sport	25
> Sports Club & House Sport.....	25
> Debating/Public Speaking Team	26
> Chess Club.....	26
> Choir	26
CO-Curricular.....	27
Student Wellbeing	28
> Well-being Team.....	28
> Year 7 to 9 Resilience Program.....	28
> Chaplaincy	28
> Positive Behaviour.....	28
> Bullying.....	28
First Aid and Medication	30
General College Information	33
> College Bus Service.....	33
College Uniform.....	33
> The College Blazer.....	34
> Seasonal Changes in Uniform	34
> Physical Education Uniforms	34
> Out of Uniform Events	35
> Approved School Bags	35
> Swimwear.....	35
> Footwear	35
> Rushfords Schoolwear	35
Key Dates & Contacts	36
> Upcoming Events	36
> Term Dates.....	36
> Key College Contacts	36
> Contact Information	36

Welcome to Christway College



Dear Parents/Guardians

We take this opportunity to welcome you to the new school year and the wonderful and exciting learning opportunities for your child. Christway College has two campuses, Kingston (25 years old) and Wyndham Vale (5 years old). Our two campuses work in union to build a great College.

Christway College staff are dedicated and highly professional; they are committed to providing a safe and stimulating learning environment for all students. The learning experiences are defined as explicit and systematic education programs, which promote skill development, knowledge capabilities, achievement, wellbeing and spirituality. We ensure that all students have the opportunity to be high potential learners and they experience optimal learning challenges. Our effective teaching and learning programs focus on differentiation and identify how all students can achieve mastery of the learning content.

We incorporate and identify the importance of deep learning capabilities, in which each student develops a toolkit of skills and knowledge. This will support the students to participate in this global and fast-moving world and develop 21st century skills, such as collaboration, communication, creativity, critical thinking, character and citizenship.

Central to our learning programs is our spiritual life and the focus on Christian living, values and biblical principles. These are the foundation in which we nurture our students to achieve their personal best. The College has a commitment to supporting the overall needs of students, their emotional, social, academic, physical and spiritual development. (Five Foundations for a Whole Child – page 2 and 7).

The Parent Handbook has been designed to provide relevant information on aspects of the teaching and learning programs, administration and day-to-day operation of the College. We embrace parent engagement as a partnership, in which we work together to support the needs of all students and their families.

We look forward to a successful and blessed school year.

Yours sincerely

A handwritten signature in black ink, appearing to read 'Damian Higgins'.

Damian Higgins
Executive Principal

A handwritten signature in black ink, appearing to read 'Kerrie Neophytou'.

Kerrie Neophytou
Head of Campus

Five Foundations for a Whole Child



The five foundations are derived from Mark 12:28-31 and serve to remind us that the children and our school are not simply brains to be filled or moulded, but that education should be about the growth in all areas or “foundations”. Hence we seek to support our children to grow Spiritually, Academically, Emotionally, Socially and Physically.

Spiritual

The Spiritual foundation is based on our belief that all people are created by God for relationship with Him, as evidenced through a personal relationship with Jesus Christ. The ‘fruit’ of this relationship should be visible in our interactions with others.

Social

We believe that God has created us as social beings who have a need to love and be loved, to belong in social groups and to feel connected to others in positive relationships. This is closely aligned with the Emotional foundation.

Physical

The Physical foundation involves any activities that develop a child’s ability to use and control their body in a coordinated and physical manner – leading to honouring God through expressing themselves in a physical way.

Academic

The Academic foundation is based on the premise that everyone is enabled to achieve to the best of their ability in their academic studies, both in learning skills and knowledge, and in gaining understanding and wisdom.

Emotional

We believe that emotional wellbeing involves being aware of your emotions, knowing and being able to use your strengths rather than just focusing on fixing problems or weaknesses, being able to make positive choices and learning to be more in control of your emotions.



Vision and Mission

The Vision of Christway College

Growing in Christ, Striving for Excellence, Influencing the World.

The Mission of Christway College

Christway College is a high quality, contemporary Christian school where we honour God and put Jesus at the centre of all we do.

We produce students who have a strong Christian faith and the capability and desire to positively influence the world around them. We earnestly help and encourage our students to develop the skills and mindsets needed for a purposeful and meaningful life in a changing world, including an innovative and enterprising mindset, initiative, a strong work ethic, empathy and a growing capacity to lead and serve others.

Through our strategic programs and wide-ranging learning opportunities, our students grow and flourish through our, "Five foundations of a Whole Child" framework. That is, they will grow spiritually, academically, socially, emotionally, and physically. This is enhanced as they strive for excellence to develop and use their God-given passions and talents.

The College Values

Learning, Integrity and Vision draw together the Mission of the College.

The College Emblem and Motto

The Motto: Learning, Integrity, Vision draws attention to the Mission of the College

Fish Dove: Represents the blending of the Christian symbols for Jesus, the Saviour and for the Holy Spirit and is the original emblem of Kingston City Church

Open Book: Represents education and the Bible

Flame: Represents integrity, character and enthusiasm

Southern Cross: Represents Australia and the need to be responsible citizens

The Broad Cross: Represents Jesus who is the head of the family, church and College



College Strategic Priorities

Our College Strategic priorities are imbedded in our community engagement and teaching and learning programs.



Strategic Goal One Church & College Unity

The College and Church is committed to being a Holy Spirit-led, united entity:

- ▶ existing and operating together as one community
- ▶ incorporating faith, discipleship, ministry, education and vocation.



Strategic Goal Two Employer of Choice

To be the employer of choice in Christian schools:

- ▶ attracting and retaining high quality committed Christian staff
- ▶ a growing number of alumni who maintain connection with the community
- ▶ highly engaged volunteers.



Strategic Goal Three Faith Formation

The College produces graduates who are:

- ▶ mature Christians
- ▶ well-equipped for ministry



Strategic Goal Four Pedagogy & Offering

Excellence in Christ-centred teaching, producing quality graduates through:

- ▶ a clear, consistent teaching and learning framework across all ages and campuses
- ▶ higher administrative and educator standards, and levels of achievement; and
- ▶ a greater education offering.



Strategic Goal 5 Compliance & Wellbeing

Establish and Maintain a Biblically safe environment which is:

- ▶ impervious to external pressures
- ▶ recognised as somewhere that students are loved and cared for
- ▶ recognised as a leading school in wellbeing for staff and students.



Strategic Goal 6 Marketing & Enrolments

We are the College of choice:

- ▶ attracting and retaining Christian students to each campus' policy and capacity
- ▶ with Christian student waiting lists at every level; and
- ▶ well-known and highly regarded for our Christ-centred culture, education, faith and character in our students.



Strategic Goal 7 Campuses & Sustainability

We are a multi-campus College with:

- ▶ a very well-managed, strong and sustainable financial model facilitating ongoing development and future campuses
- ▶ high quality infrastructure and facilities, equipped to facilitate and meet all Christian education pathways
- ▶ a third campus; and
- ▶ a model for new campuses to be deployed every 5-8 years.

Democratic Principles

Christway College is committed to teach and model the principles of Australian Democracy.

- ▶ Elected Government
- ▶ The rule of law
- ▶ Equal rights for all before the law
- ▶ Freedom of religion
- ▶ Freedom of speech and association
- ▶ The values of openness and tolerance

Student Life A-Z

Absence

We encourage parents/guardians to ensure that any absences are for unavoidable reasons such as illness. To inform an absence, parents/guardians should access their Compass portal and report the absence. (Open browser/Click on student profile/Profile/Add/Attendance Note). If for any reason parents cannot access their Compass portal, they should leave a message on the attendance line on or email office@wyndhamcc.vic.edu.au. If a student is absent for more than 2 days, the College requests a medical certificate. Parents/Guardians must contact the College if they request extended leave (more than 5 days) for the student, they must complete an application form. Students who are unwell before school hours should remain at home for the day in the interest of themselves and others. Students who are unwell and present with vomiting and diarrhea are suggested to remain home for 24 hours or until fever-free for 24 hours without medication.

Appointments

While Parent-Teacher interviews occur each semester, there may be a need to make an appointment to see a teacher. This may be initiated by the parent via sending an email to the teacher. More serious concerns should be addressed with the Head of Secondary, Steve Sobey. Teachers will either contact parent directly or via the College office arranging a suitable appointment time.

Appointments with the Head of Campus should normally be sought, after any issue of concern has first been addressed with the subject teacher, and then Head of Secondary. If the above two people have been consulted and you feel that your concern has not been adequately addressed, please contact the Head of Campus via Rebecca McFarlane.

Assemblies

Assemblies are a time in which our community shares time of celebration, fellowship and worship.

The parents and grandparents are welcome to attend. The secondary assembly is scheduled at 8:50AM once a week in the Church Hall.

Breakages

Any items broken or damaged by students will need to be replaced. The discretion of the Executive Principal or Head of Campus will be applied regarding the proportion of the replacement value to be sought from the student concerned. In general, breakages resulting from negligence or irresponsible behaviour would require the student to pay the full replacement cost.

Secondary Timetable			
First bell	8:45am	Period 3	11:15 - 12:05pm
Homeroom / Pastoral	8:45 - 9:10am	Period 4	12:05 - 12:55pm
Period 1	9.10 - 10:00am	Lunch	12.55 - 1.40pm (Inside eating 12.55 - 1.05)
Period 2	10.00 - 10:50am	Period 5	1:45 - 2:35pm
Recess	10:50 - 11:15am	Period 6	2:35 - 3:25pm

Student Life A-Z

Camps & Mission Trips

Our camps program are a vital part of the development of the 'whole child' in each student's journey. They provide many memorable shared experiences. They are a compulsory component of our programs that provide opportunities for independence, resilience and problem solving.

Canteen

Canteen orders are made via Subway every Thursday. The link is provided by the College and is the same throughout the year. Orders must be placed by Tuesday 5pm.

Chapel Services

The Secondary school Chapel Services are held once a week for all students. The format of the chapel services is varied, but usually includes A biblical focus and message and worship. Chapel services are also reinforced by the teacher in Christian Studies. All students are required to attend chapel.

Collecting Your Child During School Hours

If your child has an appointment and needs to be collected early from school, an advanced notification must be sent to the relevant teachers and the office via: office@wyndhamcc.vic.edu.au. The email must include the adults' name who is collecting the student.

When collecting your child during school hours, please attend to into the College office and then sign out your child using the Compass Kiosk. If the appointment affects instrumental lessons, please follow their notification requirements.

Contact Details

It is very important that parents notify the College office of home address or telephone contact details. We must store updated email details, as all College correspondence, including the e-newsletter, are emailed.

Communication to Parents from the College

Communication is a vital aspect of any school or community of individuals. The main source of communication from the College is emails And the newsletter. It is important to keep up to date with College information.

Communication with Teachers & Heads of School

Parents are encouraged to communicate with teachers via email, or telephone the College office on 8470 0770. Parents may make an appointment with their child's subject teacher and / or their Head of Secondary to help address any matters of concern or questions around student progress. It is expected that all communication is made in a respectful and God honouring tone and manner.

Teachers will aim to respond to emails within one working day but please do not expect teachers to be replying to emails after 5:00pm or on non-school days. Staff who work part time may take an extra day to respond.

Compass

This is our College's electronic school management system. All student timetables, class works, key dates, events, Parent Teacher bookings and College information is accessed through Compass. Parents will be provided with login information before the student begins. For new students starting, parents will receive their login at the beginning of the school year.

Complaints

Complaints may arise from time to time and we ask that, where appropriate, you first raise the matter directly with the relevant staff member. If that is not appropriate or you have raised this and the issue was not addressed to your satisfaction, you are able to contact the Head of Secondary, Head of Primary, or Head of Campus.

Alternatively, you can contact Rebecca McFarlane to forward the concern to Mr. Damian Higgins, the Executive Principal.

- ▶ Sending an email to office@wyndhamcc.vic.edu.au.
- ▶ Writing a letter to the College addressed to "The Complaints Manager"
- ▶ Telephoning the College on 8740 4770

The College Complaints Handling Policy is located on the College Website and Compass.

Student Life A-Z

Computers / Tablets / Internet

All students will be expected to sign a computer/internet use contract. Whereby they guarantee that they will use the College computers, computer network and associated hardware and software responsibly and according to the contract. Failure to do so may involve students being banned from the use of these facilities for a period of time as well as receiving other appropriate consequences. Students in Year 7 to 9 have an individual, school owned device, (the cost of which is added in College fees). Access to the College network is both restricted to current students and monitored to ensure safe digital practices and usage is maintained.

Diary

Students from Year 3 to Year 9 will receive a hard copy College diary. Compass will provide information on all work tasks and due dates but it is important for students to use the diary to visually collate these tasks and key dates to assist them in being well organised.

Discipline

A high standard of personal responsibility and behaviour is expected of students at Christway College. A more detailed explanation of our student behaviour management procedures can be found in Compass under Student Behaviour Management Procedures and on the College website.

E-Newsletter

The College e-newsletter, is a very important source of information and communication that is emailed home, also uploaded on Facebook. Please read the e-newsletter carefully and note any dates of forthcoming events. Note that we do not send home printed newsletters.

Excursions

Every Secondary class is involved in an excursion program. Parents are advised of the details of the excursion via compass and email, usually sent home two weeks prior to the excursion. Excursion details or updates can be viewed in Compass Events. Parents will also be reminded to ensure their child's medical information and emergency contact details are up to date.

Please note: Students will need to wear full school uniform, however sports uniform for sport events. They are not permitted to wear casual clothing on excursions.

First Day of the Year

All Secondary students will go directly to their class at 8:45am on the first day of the school year, with their school bags, for an initial welcome assembly.

They will receive communication in January on their homeroom teacher and classroom location. A locker is allocated to all students to store their belongings. Please ensure ALL items of clothing and belongings are clearly named.

This is a very exciting and special day we encourage parents to stay and chat with parents. Toddlers and babies are welcome.

Hats

A College hat must be worn by all students in Terms 1 and 4 during recess and lunch, when outside. This is important sunsmart practice the College reinforces.

Homeroom

The first fifteen minutes of the day will be spent in Homeroom, with the students and homeroom teacher. The class will participate in devotions, prayer and Bible reading. This Homeroom time is compulsory and students must be punctual.

Homework

Assignment work is set throughout the term, with teachers providing appropriate notice as to when the work is required to be submitted. Parents are encouraged to advise their child that, on nights when there is no specific homework, to work on assignments, general revision and reading. This will provide the opportunity to develop and reinforce good study skills.

The following is a guideline for homework time, although this will vary at different times throughout the year.

Year 7	1 hour
Year 8	1¼ hours
Year 9	1½ hours
Year 10	2 hours
VCE	More than 2 hours or as required.

Student Life A-Z

As a general guideline, the amount of homework given in any subject will be proportional to the amount of time that subject occupies in the timetable. An exception will be French and Instrumental Music, where repeated practice is essential for mastery. Homework helps to reinforce concepts taught at school, and therefore, all students are expected to do any homework prescribed and to plan this homework in their diary. Any difficulties with the completion of any homework should be communicated to the teacher via email. Students should not spend their entire homework time allocation on one subject at the expense of other subjects.

Late Arrival

We encourage families to develop good morning routines to ensure students arrive before 8:45am. Students arriving after 8:45 are required to sign in at the Compass kiosk in the College office.

Changing Schools / Leaving the College

If your child is changing schools and leaving the College at any stage through the year or for the beginning of the next school year, one term's written notice is required. In lieu of such notice, a term's fee is payable.

Lost Property

Everything you bring or wear to school should be named. Lost property is located outside Building 1A.

Parental Assistance

All Secondary parents are encouraged to be involved in some way in the life of the College. Some of the ways that parents may become involved in the College include: the PFA, classroom helpers, Father's and Mother's day stall, attending excursions, assisting with covering books, and working bees.

Please see the coordinator of these groups that are advertised in the College newsletter.

All parent helpers require a current Working With Children Check and complete an Induction session.

Parent Etiquette and Behaviour

The College greatly values relationships with its parents and actively encourages parental involvement in College activities. The College recognises that parents have the primary responsibility before God for the training and nurture of their children and seeks to support parents in this role.

Parents must ensure that, in line with our Child Safe policy, they do not go beyond the auditorium (Chapel) or College office without signing in, and this will only be allowed under special circumstances.

Parents are most welcome to attend chapel services and College assemblies, however, we ask to please refrain from talking to other parents while these events are in progress. Mobile phones cannot be used at these time.

We expect that any interactions with teachers and other parents are conducted in a courteous, respectful and God honouring manner.

We request that parents abide by the carpark speed limit of 10km/h and follow parking restrictions on the College grounds.

Parents & Friends Association (PFA)

The PFA meets regularly and organises social and fundraising events in the College calendar. It also occasionally provides pastoral care, such as meals to College families in need.

Policies

The College Board has formulated and ratified a range of policies for the College. The policies may be viewed on the College website or by contacting the Head of Campus.

Celebration Night

Celebration Night is the highlight event of the school year where we have the opportunity to acknowledge the achievements of our students. It is held at the end of the year (check Compass Calendar for the date) and all families are very welcome to attend. Ticketing is required and details are published in Term 4.

PR (Public Relations)

What parents say about the College, whether positive or negative, has a huge effect. We do encourage you to talk to others about your positive experiences at Christway College. Word of mouth is our major source of advertising and gaining new enrolments.

Student Life A-Z

Reports of Student Progress

Numerous studies have concluded that, in order to enhance a student's progress, feedback from teachers needs to be explicit, early and often. 'Informative feedback' has a great effect on student learning. Thus, Christway College uses a system of Progressive Online Reporting (POR). POR is a form of continuous reporting, which means that students and parents are given meaningful feedback and receive assessment results regularly throughout the semester, rather than just at the end.

The benefits of Progressive Online Reporting include:

- ▶ Students become more motivated to improve their grades if there is transparency over their achievements and areas for improvement as they keep moving through the semester. Not only does it allow students to constantly reflect on their progress and make improvements as they go, but parents are also more involved in their child's educational journey as they receive frequent updates on their progress.
- ▶ Timely feedback – the progress report is issued when the task is completed and assessed, enabling the teacher, student and parent to identify, intervene and improve.
- ▶ Greater accountability of students' work habits.
- ▶ No surprise results coming home at the end of a semester. If there is a problem, parents are notified when it arises.
- ▶ Regular dialogue between parents, teachers and students is promoted.
- ▶ Access online anywhere via Schoolbox.

In addition to this, formal school reports are also provided at the end of the first and second semesters (June and December).

Booklist

The Booklist is published in Term 4 for the following year and a hard copy may be found at our College office.

Student stationery should be named and all folders, pencil cases and exercise books should not contain any graffiti, stickers or pictures. Plain or modestly patterned self-adhesive covers are, of course, permitted. The students access their books from Jacaranda, in e-book format. They do not need hardcopies and it is only a personal choice.

Student Expectations

Students are expected to:

- ▶ care for their appearance and the property of others.
- ▶ build positive relationships with other students and their teachers.
- ▶ respect, support and create a positive learning environment for all students.
- ▶ be punctual for each period/lesson and line up outside the classroom.
- ▶ enter the classroom only when a teacher is present.
- ▶ be fully prepared with all learning materials required for that lesson.
- ▶ be polite and considerate to others.
- ▶ participate to the best of their ability in all learning activities.
- ▶ be good stewards of the facilities, including taking care of furniture, fittings and leaving the classroom neat and tidy at the end of the lesson.
- ▶ follow all instructions issued by teachers, where safe to do so
- ▶ complete all work to the highest possible quality and by the due date.

Student Health

All our student health records and emergency contact details must be kept up to date by parents. New parents will receive an email requesting them to provide important medical details. Ongoing reminder emails are sent to parents to update records as required. Parents are responsible to provide annual Anaphylaxis, Allergy and Asthma Plans.

Student Representative Council (SRC)

The Student Representative Council offers student representation on matters concerning the daily life of the College. Two representatives are chosen from each year level by students in that year.

Timetable

Each student's timetable is located in the Compass schedule and can also be viewed in Compass by parents. It would be wise to copy this into the school diary and a copy kept in the locker.

Student Life A-Z

Uniforms

See page 33

Visitors

In the interests of everyone's safety, no student is permitted to have visitors at the College at any time. Only visitors on legitimate business will be issued with a visitor's pass. Visitors to the College need to sign in at the visitor's book in the College office upon arrival. A visitor's pass will not be issued to ex-students or friends of students for the purpose of socialising during recess and lunchtimes.

Website

The College's website can be found at <https://www.wyndhamcc.vic.edu.au/> and contains lots of useful information about the College.

Facebook/Instagram

Christway College has a Facebook page which contains current day to day information relating to life at the College.



Looking Ahead To Christway College

Our heart is to educate, encourage and support your child through their learning journey and into their future.

Transition Program For New Students

In the Secondary School, students have a Pastoral teacher, plus a team of dedicated teachers who are responsible for the delivery of the curriculum, discipline, and student welfare.

Students continue to meet with their pastoral teacher at the beginning of each day however will move classrooms and see different teachers depending on their subjects and their daily timetable.

If parents have any non-subject-specific concerns, they are encouraged to contact their child's pastoral teacher for support and assistance in accessing the appropriate College leader or supportive service. Parents can email subject teachers directly for concerns related to the curriculum. The Head of Student Wellbeing, checks in with all new students, supporting their transition to a new school.

Orientation Day For New Students

Orientation Day will occur in Term 4. On this day students will meet with the Head of Secondary, the Pastoral Teacher, the core and elective teachers, and their new classmates.

Orientation Day is an opportunity for students to become familiar with their peers and teachers, as well as familiarise themselves with their new environment. This visit is designed to answer the students' questions and dispel any fears about attending Secondary School at Christway College.

Testing Day For New Students

A Testing Day will be held in November. Testing is undertaken to gauge the overall literacy and numeracy standards of each student before entering Year 7, 8, & 9. This assists the College in providing the relevant and necessary educational and pastoral support for the students.



Teaching And Learning

Philosophy of Teaching and Learning

Christway College is a high quality, contemporary Christian school that seeks to honour God and put Jesus at the centre of all we do.

“A Christian boy or girl can learn mathematics, for example, from a teacher who is not a Christian; and truth is truth however learned. But while truth is truth however learned, the bearing of truth, the meaning of truth, the purpose of truth, even in the sphere of mathematics, seem entirely different to the Christian from that which they seem to the non-Christian; and that is why a truly Christian education is possible only when Christian conviction underlies not a part but all, of the curriculum of the school.” – John Gresham Machen

We provide a comprehensive academic curriculum, based on the Australian Curriculum, delivered through authentic learning experiences by a staff who have a distinct, ‘Christ Centered’, background from which they approach their teaching. The Biblical Worldview is embedded in ALL subject areas and permeates throughout our community, creating an environment where everyone can feel successful. Teaching and learning at Christway College is based on the belief that we can make a difference to the day-to-day lives of all our uniquely gifted students.

We aim to produce graduates who are growing in their Christian faith and capable of positively influencing the world around them. We encourage them to develop the skills and mindsets needed for a purposeful and meaningful life in a changing world, including a strong work ethic, independence, empathy, initiative, an innovative and enterprising mindset and a growing capacity to lead and serve others.

Through our strategic programs and learning opportunities, we want our students to grow in line with our “Five Foundations of a Whole, Child”. That is for them to grow spiritually, academically, socially, emotionally and physically. This will be enhanced as they strive for excellence to develop and use their God-given passions and talents.

“For we are God’s handiwork, created in Christ Jesus to do good works, which God prepared in advance for us to do.” – Ephesians 2:10 Jesus himself did not simply come to inform, He challenged individuals to transform and we are dedicated to follow His lead and build His kingdom. With this as our foundation, our school takes its responsibility of supporting parents in nurturing the character of each student seriously and endeavours to play a role in meeting the needs and aspirations of its students.

Partnering with our parents, we seek to provide an authentic Christian education, we seek to bring life to individual learning styles, developing each student’s God-given potential and igniting curiosity through a living curriculum and experiences that touch every aspect of their lives. We seek to equip students with strong ownership of their own biblical worldview to flourish, to shine for God, and who can make a positive, fruitful contribution to the community.

Learning at Christway College

Our curriculum consists of core and elective subjects. As students progress through the year levels, they will be provided with a greater subject choice to identify strength areas and areas of interest that they may wish to pursue further in Years 10-12.

When considering subject selection, students should choose subjects based on the following criteria:

- ▶ An opportunity to explore more deeply, areas of existing interest and skill
- ▶ An opportunity to develop new areas of interest and skill
- ▶ The relevance of the subject as a pathway to a possible VCE program or career

We offer a broad inclusive curriculum that is traditionally academic in nature with students completing subjects from all Key Learning Areas. As the College grows, we will offer VCE and other flexible learning options in Year 10-12. The Curriculum offered at Christway College is a unique alignment of:

- ▶ Our Christian ethos and biblical worldview
- ▶ The Melbourne Declaration on Educational Goals for Young Australians
- ▶ The Australian Curriculum
- ▶ Democratic Principles
- ▶ Victorian Certificate of Education
- ▶ Victorian Pathway Certificate

Christway College follows the Australian Curriculum. This is a framework for student learning that starts from Foundation (Prep) and ends at Year 10. It describes the knowledge and skills required by students to be lifelong learners. The students must study a language other than English from Year Prep to 9 (French), and Christian studies from Prep to Year 10.



Learning Support

Learning Support

The Learning Support program is designed to provide additional support to cater for individual student needs. The Support team works with students in class and with withdrawal evidence-based programs.

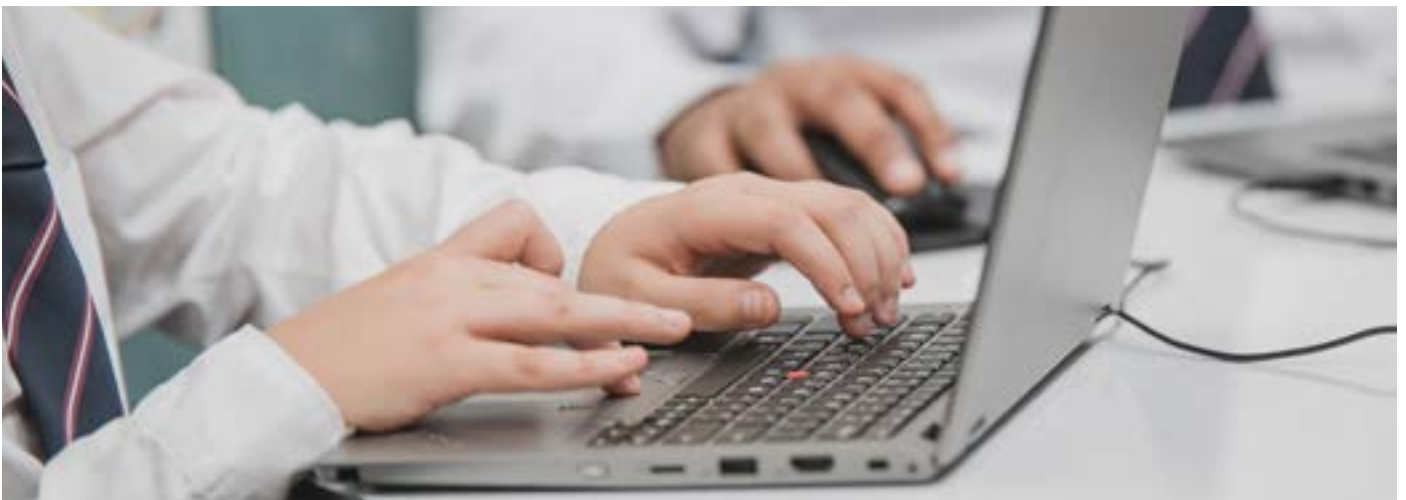
Learning Assistants

To support student learning in the classroom, Christway College will provide Learning Assistants (LA). Support provided by an LA includes one-on-one assistance, small group withdrawal or general classroom support



Personalised Learning Plans (PLP)

Personalised Learning Plans are created for students who require individual support to support their ability to access the teaching and learning program. Student Support meetings (SSGs) are held with teachers, students, and families to discuss individual needs and support measures. All students who receive a PLP, will require their parents to attend a Student Support Group (SSG) meeting, in which the goals and support is discussed and explored.



Australian Curriculum

The Australian Curriculum is designed to help all young Australians to become successful learners, confident and creative individuals, and active and informed citizens. The three-dimensional design of the Prep to Year 10 Australian Curriculum recognises the importance of the 8 key learning areas, knowledge and skills and alongside 7 general capabilities and 3 cross-curriculum priorities.

Disciplinary knowledge, skills and understanding are described in the eight learning areas of the Australian Curriculum: English, Mathematics, Science, Health and Physical Education, Humanities and Social Sciences, The Arts, Technologies and Languages.

In the Australian Curriculum, general capabilities encompass knowledge, skills and behaviours. Students develop capability and the cross-curriculum priorities when they apply knowledge and skills confidently, effectively and appropriately in complex and changing circumstances, within their learning at school and in their lives outside school.

Key Learning Areas	General Capabilities
<ul style="list-style-type: none"> ▶ English ▶ Mathematics ▶ Science ▶ Christian Studies ▶ The Humanities and Social Science (HASS), includes 5 subjects: <ul style="list-style-type: none"> > HASS P – Year 6 and 7 > History Year 7 to 10 > Geography Year 7 to 10 > Civics and Citizenship Year 7 to 10 > Economics and Business Year 7 to 10 ▶ Technologies: <ul style="list-style-type: none"> > Design and Technologies (includes Food Technologies) > Digital Technologies ▶ Languages (French) ▶ Health and Physical Education ▶ The Arts <ul style="list-style-type: none"> > Dance, Drama, Media Arts, Music, and Visual Arts 	<ul style="list-style-type: none"> ▶ Literacy ▶ Numeracy ▶ Information and Communication Technology (ICT) capability ▶ Critical and creative thinking ▶ Personal and social capability ▶ Ethical understanding ▶ Intercultural understanding
	<p style="text-align: center;">Cross-Curriculum Priorities</p> <ul style="list-style-type: none"> ▶ Aboriginal and Torres Strait Islander histories and cultures ▶ Asia and Australia’s engagement with Asia ▶ Sustainability

Subject Allocation

The table below indicates the period allocation per subject, in the 10-day cycle. There are 60 periods of learning across the cycle.

Subject	Periods per cycle
English	9
Mathematics	9
Science	8
Humanities: History/Geography/Business & Economics/ Civics & Citizenship	10
LOTE	4
Physical Education	4
Christian Studies	2
Chapel	2
Health	2
Specialists Subjects (2 electives a semester)	8
TOTAL	60 PERIODS



Curriculum Pathways

Curriculum Pathways & Curriculum Map			
Curriculum	Year 7 & 8 Subject	Year 9 & 10 Subject	VCE/VCE VET Subject
Faith & Service	Christian Studies Chapel Daily Devotions Assembly Year 7 & 8 Adventure Camp	Christian Studies Chapel Daily Devotions Assembly Year 9 Challenge Camp Year 10 City Mission	Christian Studies Chapel Daily Devotions Assembly Year 11 & 12 Study Camps Year 11 & 12 Mission Trip (TBA)
Languages	English French	English French	English English Literature LOTE
Mathematics	Mathematics	Advanced Mathematics General Mathematics	Specialist Mathematics Mathematics Methods General Mathematics
Science	Science Environmental Science	Advanced Science	Physics Chemistry Biology Psychology
Humanities	Humanities	Year 9 Humanities <ul style="list-style-type: none"> ▶ History ▶ Geography ▶ Civics & Citizenship ▶ Economics & Business Year 10 Humanities ▶ History ▶ Geography Year 10 Legal Studies Year 10 Business Studies	History Geography

Curriculum Pathways

Curriculum Pathways & Curriculum Map			
Curriculum	Year 7 & 8 Subject	Year 9 & 10 Subject	VCE/VCE VET Subject
Technology	Digital Technologies Food Technology Robotics/Coding	Digital Technologies Design and Technologies (Food Tech)	Applied Computing Food Studies
Visual & Performing Arts	Media Communication Design Visual Art Music Drama	Visual Art Music Drama Media Studies	Studio Arts Visual Comm Design Music Performance Drama Media Studies
Health & Physical Education	Physical Education Heath Outdoor Education Interschool Sport	Health Physical Education Sports Science Health Outdoor Ed. Interschool Sport	Physical Education Health & Human Development Outdoor Enviro Studies Interschool Sport*

* This table provides a summary of proposed subjects.



Curriculum Pathways

- ▶ Electives are arranged into two blocks and are subject to change.
- ▶ Two subjects are completed in Semester One and two subjects in Semester Two.
- ▶ Each subject is timetabled for one double period per week – that is four periods of elective subjects per week.
- ▶ Students cannot select two electives from the same block as the subject runs at the same time.
- ▶ As places are limited in each class, students will be asked to provide their first and second preference.

Block	Block A	Block B
Semester 1	Digital Technologies (Coding/Robotics/ Lego)	Design & Technologies (Food Technology)
	Media Studies	Performing Arts (Music)
	Visual Arts	Outdoor Education
Semester 2	Digital Technologies (Coding/Robotics/ Lego)	Design & Technologies (Food Technology)
	Media Studies	Performing Arts (Music)
	Visual Arts	Outdoor Education

* This table provides a summary of proposed subjects.

A sample program:

Semester 1: The Year 8 student may select Digital Tech (Block A), Food Technology (Block B).

Semester 2: The student may select Environmental Science (Block A), Performing Arts Music (Block B).

Schoolbox

Schoolbox is software that facilitates the learning that takes place in the classroom, by providing teachers a modern learning platform to share teaching resources, assess and provide feedback for students and their parents. We encourage collaboration between students, and use personalised mechanisms to complement individual learning needs. It provides individualised timetables for students, as well as due dates and diary planning.

Reporting

At Christway College, reporting is a continuous, ongoing process consisting of a mix of verbal and written communications; families can expect:

- ▶ Continuous feedback in the form of written comments, rubrics, and grades
- ▶ Teacher phone calls, emails and meetings
- ▶ Parent-Teacher Interviews (Term 1 and Term 3)
- ▶ End of semester Reports (semester 1 and 2)
- ▶ Personalised Learning Plans (if required)
- ▶ Student Support Group Meetings (if required)



Year 7 to 9 Device Program

One to One Devices

This program requires all Year 7 students to have a College mandated and supplied Windows Laptop for the purposes of:

- ▶ Enhancing their learning experience through the use of the Microsoft 365 suite of applications, licensed electronic textbooks and other digital educational learning sites and programs.
- ▶ Accessing College information, curriculum and results. Our College management system – Compass along with our new Student Learning System – Schoolbox, will be where students access their timetables, daily news and changes, curriculum outlines, homework and assessment results.
- ▶ Developing key skills including, but not restricted to; keyboarding, sourcing, processing and utilising data, personal organisation, collaboration and communication.

Electronic Learning Devices and Usage

In 2024, the selected College device for our Year 7s is the Lenovo ThinkPad L13 Yoga Gen 3. We are providing the Lenovo ThinkPad L13 Yoga Gen 4 at cost price. This will be spread over a 3-year period with a \$50 buy-out fee at the end of the three-year period, to make this investment more manageable for families.

The device will be College owned and managed and as such Students will be required to take appropriate care of the devices.

The College will control downloadable content and online access and usage. Students will therefore be restricted in what online content they are able to access and download, the intention being that these devices will be used primarily for educational purposes rather than for recreational and/or gaming purposes.

These controls are intended to help students cultivate responsible digital habits and acquire the necessary digital skills from a young age to become responsible digital citizens.

Cost

Parents will be required to pay an annual ICT Device Levy of \$587 per year for 3 years for their children to use the device. This fee will be included in your Secondary Resource Levy and added to your FACTS account. If you choose not to purchase the device at the end of the 3 years, it must be returned to the College in good working order.

The College will also provide licensing for Compass, Schoolbox, Microsoft 365 and other digital learning programs, a full 3-year Business Grade warranty (Accidental Damage Protection \Theft insurance with an excess of \$100 for each claim), along with full back up and technical support during College hours. We will also provide a 'hot swap' device when available. This means when a device has a technical issue that cannot be immediately resolved by the ICT Department, the student will be able to keep learning with a temporary device. We have factored in spare devices to allow for this where possible.

An agreement form will be sent out at the start of the school year with full details for parents to sign.

Training

Students will receive training on their Lenovo device at the beginning of 2024 during the first week of school.

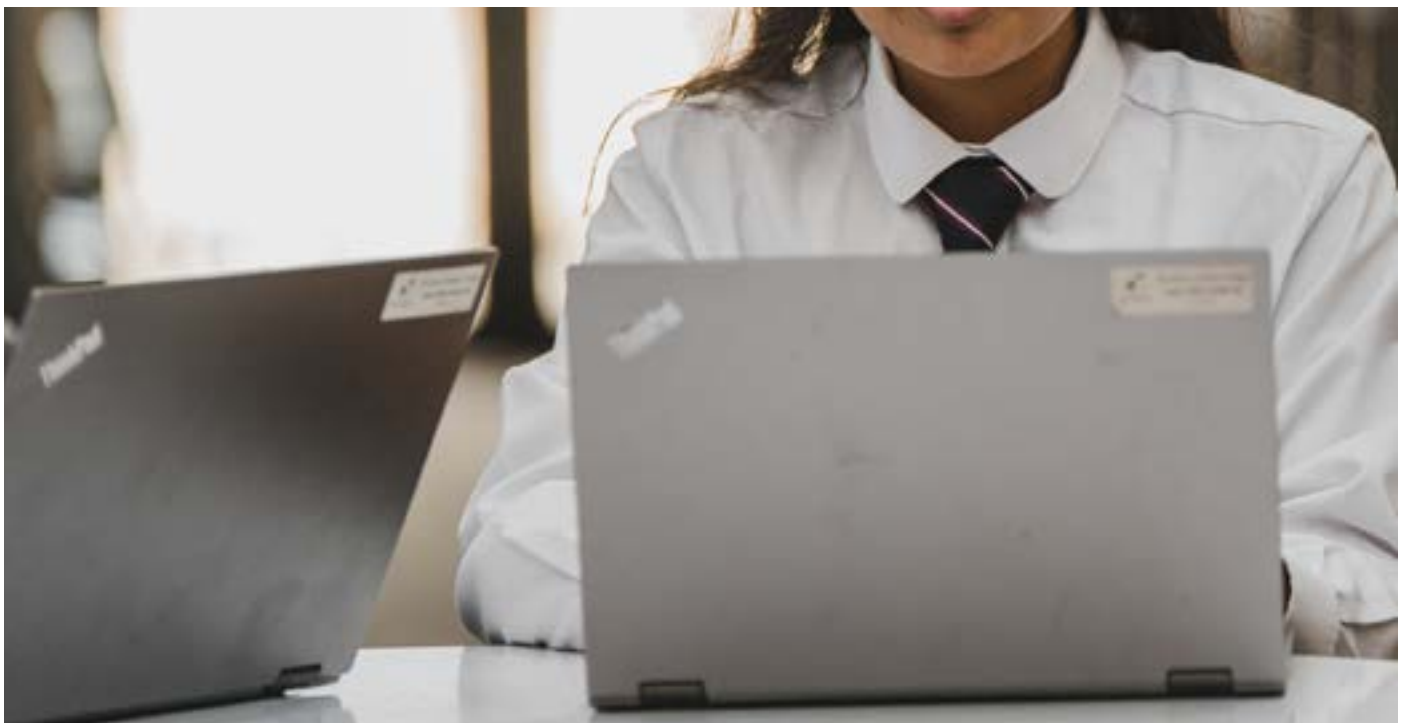
During this time, students will be asked to agree to and electronically sign the Student ICT Acceptable Use Policy and Student Device Program Agreement.

Year 7 to 9 Device Program

Warranty

The College will also provide licensing for Compass, Schoolbox, Microsoft 365 and other digital learning programs, a full 3-year Business Grade warranty (Accidental Damage Protection \ Theft insurance with an excess of \$100 for each claim), along with full back up and technical support during College hours. We will also provide a 'hot swap' device when available. This means when a device has a technical issue that cannot be immediately resolved by the ICT Department, the student will be able to keep learning with a temporary device. We have factored in spare devices to allow for this where possible.

**Please note: The warranty does not cover loss or damage caused by disappearance, misplacement, and reckless misuse, abusive, willful or intentional misconduct.*



The Vision for Year 9 Students

Our Year 9 program enables students to explore and develop essential skills for living well, including complex, reflective, creative, inquiring thinking, effective communication skills, and literacy in the arts and numeracy. The program focuses on personal futures including identity, faith, well-being, ethical goals, vocational exploration, and social responsibility, such as being servants in God's world and agents of hope and creativity for the future.

The program meets the specific needs of adolescents for choice, a voice, exploration, community & relationships, fun, authenticity, practical action & values, and worldview formation. It allows for flexible and innovative ways of learning, providing a change in the educational milieu of the secondary years.

Throughout the year, students will become an advocate for a person who is not heard. This is not a mindset about US and THEM, rather, it is about understanding human problems and how they affect real people. Students will be responsible for investigating a real-life person and sharing their story. All these stories will be heard at an expo at the end of the year.

The Year Ahead

Term 1 – Creation (4th – 8th March 2024)

Story Line

Created to create, to live in community, to look after our resources, and help each other.

Deep Hope

To see God’s creativity in the world around us and develop a greater understanding of our lives through it.

Throughlines

Pondering Creation, caretaking Earth

The first term, “Marvel and Mystery,” revolves around understanding God’s original plan for humanity and its relevance to our current way of living in His Kingdom. Students explore the notion that collaborating with others aids in self-discovery while being in and contemplating nature enhances one’s understanding of God. The term culminates with a week-long journey to Phillip Island, where students work and live together. The central inquiry of this term focuses on identifying how God’s goodness is revealed in His creation.

Overview

The Year 9 camp to Phillip Island will explore the natural surroundings of this stunning island through the lens of the biblical narrative of Creation. As we embark on this journey, we will discover the wonders of God’s handiwork in the flora, fauna, and landscapes that surround us.

Throughout our camp, students will engage in reflective activities and discussions centred on the biblical narrative of Creation. By exploring the themes of God’s creative power, the interdependence of all living things, and the call to care for the earth, we can deepen our understanding of our place in the world and our responsibility to protect and preserve the natural environment.

Term 2 – Health (11th – 14th June 2024)

Story Line

Live Your Story

Deep Hope

We will learn stories of ourselves, the world, and the people around us; we are all part of God’s big story of love for His people; and how we can live our stories now, using our God-given gifts, passions and identities.

Throughlines

Celebrating life, expressing words, and unwrapping gifts.

Overview

The focus of Term 2 acknowledges the pervasive impact of “The Fall” on all aspects of existence, including our own selves; we delve into the characteristics of this corrupted state. The term is devoted to Health Experience, an all-encompassing week where we explore the eight wellness dimensions: Emotional, Environmental, Financial, Intellectual, Occupational, Physical, Social and Spiritual. Through introspection, students examine how a biblical viewpoint aligns with each of the dimensions, including emotional, intellectual, environmental, and more. This term aims to empower every student to discover their identity in Christ by asking the fundamental question, “Who am I?”

The Year Ahead

Term 3 – Service (9th – 13th September 2024)

Story Line

To have a servant heart

Deep Hope

By serving their community, students will come to understand that love is not just a feeling or an idea but an action that must be expressed through concrete actions.

Throughlines

Practising Hospitality

Overview

The Service Experience program is designed to allow students to actively engage with God as He works to bring renewal to His people. As Christians, we are called to respond to God's mercy by offering ourselves as living sacrifices and using our lives in service to Him as an act of worship. Students will gain a deeper understanding of what participating in God's Kingdom Story means by studying the Biblical Narrative of God's rescue plan and exploring the meaning of Jesus' command to love God and others.

Through their service (in partnership with other organisations), students will see firsthand how they can make a tangible difference in the lives of others and how their actions can contribute to building God's Kingdom here on earth. By recognising their service as an act of kingdom-building, students will gain a deeper appreciation for the value and significance of their actions. They will be encouraged to continue to serve others in their everyday lives.

Term 4 – City Experience (18th – 22nd November 2024)

Story Line

How the city is both a triumph and a tragedy.

Deep Hope

Through their exploration of the city, students will be challenged to look beyond the surface-level issues and examine the underlying spiritual forces at work. They will be encouraged to seek God's heart for their community and listen for His voice as they discern how they can partner with Him in restoring and healing.

Throughlines

Challenging Distortions

Overview

In Term 4, students will shift their focus outward to the world around them. Students will engage in a weeklong city experience where they will explore the big question of how their city is both a triumph and a tragedy. This experience will challenge them to look beyond their community's surface-level issues and examine the deeper social, economic, and spiritual forces at work.

Ultimately, this term aims to help students discover their unique calling and equip them to live out their faith in the world around them. By partnering with God in His work of restoration, students will be able to make a tangible difference in their communities and contribute to building God's Kingdom here on earth.

Extra-Curricular Opportunities

Student Leadership

The College has a Primary and Secondary structure with Captains positions. The College will appoint Primary School Captains (P-6) and Secondary School Captains (Year 7-9).

As part of their role, Captains address families, students, and community members at special events such as Assemblies, Information Evenings, Chapel services or the opening of new buildings.

Four students will be appointed as House Captains, they work to promote participation in sporting and extra-curricular activities.

Captains and House Captains receive structured leadership training throughout the year.

Additionally, two volunteers from each class will be selected to represent their classmates as members of the Student Representative Council (SRC). The role of the SRC is to advocate for their fellow students to ensure that the school is a positive environment for all.

Music

Music is very popular at Christway College. This is taught as part of the curriculum but is also offered as an extra-curricular program at an additional cost. During school hours, students may study a wide variety of musical instruments in private or small group lessons, the instructor is fully qualified. Students who participate are withdrawn from class for 30 minutes each week to attend lessons in the music classroom.

Competitive Sport

Students from Year 5 to Year 9, have the opportunity to compete with the CSEN Western Region (Christian Schools Events Network) and other local competitions. The College also engages in regular interschool competitions with local Christian schools. The competition includes:

- ▶ Netball Victoria championship
- ▶ Victorian College Basketball
- ▶ Cross country CSEN
- ▶ CSEN Athletics
- ▶ CSEN Swimming
- ▶ Boys & Girls Volleyball
- ▶ Boys & Girls Netball
- ▶ Boys & Girls Basketball
- ▶ Boys & Girls AFL 9's
- ▶ Boys & Girls Badminton
- ▶ Boys & Girls Softball
- ▶ Boys & Girls Tennis

Sports Club & House Sport

The Sports Club caters for students who enjoy sports but are not part of a competitive team. This club support students to develop their sporting skills, fitness and health while enjoying an in-house sporting program. Additional to this, all students will engage in the House Cross Country & Athletics and may elect to be involved in competitions. High scoring students have the opportunity to compete at higher levels.

Extra-Curricular Opportunities

Debating/Public Speaking Team

The Debating and Public Speaking team will develop the students' eloquence in public speaking and their confidence in debating in front of an audience. Debating facilitates analytical thinking, where students will be trained to think quickly, build confidence and further develop skills in reasoning and communication.

Students learn the technical side of debating, as well as how to formulate an argument and engage in this dialogue with calmness and respect. Students learn strategies to develop their critical thinking, analyse persuasive arguments and use their speaking and writing skills to persuade others.

Clubs

The children have the opportunity to experience lunch time and after school clubs from Prep to Year 6, these include Chess, Ukulele, Crafts, Dance and Choir.

Choir

Students will gather each week to master their singing ability and learn to sing with others. Students will perform at assembly, worship, school events and inter-school choir competitions.



The House System at Christway College

Students at all grade levels are assigned to a house team upon commencement at Christway College. The structure of the house teams allows students to build friendships across year levels. The house teams offer students opportunities to seek positions of leadership, as well as developing relationship building and teamwork skills.

The four houses are Carmel, Zion, Tabor and Bethel, all of which are named after prominent places in the Bible.

Carmel (Green): Fruitful – God is Our Joy

Mount Carmel is a coastal mountain range in northern Israel stretching from the Mediterranean Sea towards the southeast. The word “Carmel” means ‘God’s vineyard’. According to the Old Testament, Elijah defeated the priests of Baal at Mount Carmel.

Zion (Red): Fortress – God is Our Shield

Mount Zion is a hill in Jerusalem just outside the walls of the Old City. The word Zion occurs over 150 times in the Bible. It essentially means ‘fortification’ and has the idea of being ‘raised up’ as a ‘monument.’

Tabor (Blue): Heights – God is Our Power

Mount Tabor is located in Lower Galilee, Israel. Mount Tabor is believed to be the place of the transfiguration of Jesus Christ, where Jesus began to radiate light and conversed with Moses and Elijah.

Bethel (Yellow): House of God – God is Our King

Bethel, ancient city of Palestine, is located just north of Jerusalem. Bethel means ‘house of God’. Bethel was important in Old Testament times and was frequently associated with Abraham and Jacob.

House Competitions

All students are given an opportunity to compete in and represent their house (Carmel, Zion, Tabor and Bethel) at four major house events each year:

Term 1: Cross Country

Term 2: House Athletics

Term 3: House Sports

Term 4: House Sports

Student Wellbeing

Well-being Team

Our Wellbeing Team is based on a strengths-based approach in wellbeing to support students to become aware of their thoughts, strengths, and goals, and to discover and utilise their God-given talents to build resilience, improve their overall wellbeing, and make a difference in the world. Our Head of Student Wellbeing focuses on developing a proactive wellbeing team, which builds upon the culture of care and support within the school community.

Positive Behaviour

Christway College utilises a positive and proactive behaviour management approach that emphasises prevention, support for students and focusing on the development of values, relationships and skill-building needed to behave positively.

A positive behaviour approach is demonstrated by:

- ▶ Explicit teaching and practice of expected behaviours
- ▶ Positive reinforcement for good behaviour
- ▶ Opportunities for students to express concerns and share their story
- ▶ Planned responses to inappropriate behaviour that include additional teaching and support

A proactive approach seeks to prevent behavioural incidences before they occur. At Christway College, our teachers build strong relationships with students and focus on the behaviour they want the students to model rather than what they don't want the student to do.

Bullying

Bullying is considered a very serious matter. Parents are asked to notify the relevant head of sub-school as soon as they are aware of any bullying issues. We will work with all parties to resolve issues promptly and effectively according to the 'Student Behaviour Management Procedures'.

What is Bullying?

Bullying is an ongoing misuse of power in relationships through repeated verbal, physical and/or social behaviour that causes physical and/or psychological harm. It can involve an individual or a group misusing their power over one or more persons. Bullying can happen in person or online, and it can be obvious or hidden. Bullying of any form or for any reason can have long term effects on those involved.



Student Wellbeing

Including bystanders.

There are many different types of bullying that can be experienced by children and adults alike, some are obvious to spot while others can be more subtle. The different types of bullying that we look at below are some of the ways that bullying could be happening.

Physical bullying

Physical bullying includes hitting, kicking, tripping, pinching and pushing or damaging property. Physical bullying causes both short term and long-term damage.

Verbal bullying

Verbal bullying includes name calling, insults, teasing, intimidation, homophobic or racist remarks, or verbal abuse. While verbal bullying can start off harmless, it can escalate to levels which start affecting the individual target.

Social bullying

Social bullying, sometimes referred to as covert bullying, is often harder to recognise and can be carried out behind the bullied person's back. It is designed to harm someone's social reputation and/or cause humiliation. Social bullying includes:

- ▶ Lying and spreading rumours
- ▶ Negative facial or physical gestures, menacing or contemptuous looks
- ▶ Playing nasty jokes to embarrass and humiliate
- ▶ Mimicking unkindly
- ▶ Encouraging others to socially exclude someone
- ▶ Damaging someone's social reputation or social acceptance.

Cyber bullying

Cyber bullying can be overt or covert bullying behaviours using digital technologies, including hardware such as computers and smartphones, and software such as social media, instant messaging, texts, websites and other online platforms. Cyber bullying can happen at any time. It can be in public or in private and sometimes only known to the target and the person bullying.

Cyber bullying can include:

- ▶ abusive or hurtful texts, emails or posts, images or videos
- ▶ deliberately excluding others online
- ▶ nasty gossip or rumours
- ▶ imitating others online or using their login

First Aid and Medication

In circumstances where a student becomes unwell or suffers an injury during the school day, they are to inform the appropriate teacher, who will then send them to the College office for first aid treatment if necessary. Our first aid room is staffed by caring attendants who are qualified in workplace first aid.

Students are not permitted to phone their parents or guardians and request them to collect them from the College. This decision is to be made only by the teacher or first aid staff member. These staff, acting as “loco parentis”, will use their discretion as to whether the child should remain at school in the first aid room or whether the parent/guardian should be contacted, and arrangements made for the child to be taken home.

In the event that either parent/guardian cannot be contacted, first aid staff will contact an emergency carer; so it is important that their details are always kept up to date. Naturally all reasonable attempts will be made to contact one of the parents or guardians. It is expected that the request will be attended to immediately. It is the responsibility of the parents/ guardians to make alternative arrangements if they cannot personally come to the College and collect their child promptly. Any medical expense administered in relation to an illness and/or injuries suffered by a student whilst undertaking College activities, are not covered by the College. Parents/ guardians will need to claim any costs through Medicare or their private health insurance.

Please note that sometimes it is imperative that our teaching or first aid staff call an ambulance. The cost of this will be met by the family, so for this reason the College suggests that families consider taking out Ambulance Victoria membership. In the event of an emergency situation where an ambulance needs to be called, and a parent/guardian or emergency carer is unavailable, a staff member will accompany the child to the hospital in the ambulance.

Medication at School

According to regulations, first aid staff cannot administer medication to any child without written permission from their parents/guardians. If, upon doctor's orders, ongoing medication is required whilst the child is at the College, a letter from the doctor explaining the dosage is required. The original packaging must be sighted by the first aid staff. The parents/guardians will also need to complete the appropriate medication permission form in the College office.

All medication will be held in the first aid room and be administered ONLY by the first aid staff. No medication is to be brought on to the College grounds by any student without our first aid staff being informed beforehand. In cases where a student is required to take some form of medication, either temporarily or regularly, it is important that the parent/guardian complete a Medication Request Form, these forms can be collected from the College office. These forms include the name of the medication, dosage required and time of administration. If deemed necessary, medication such as paracetamol or antihistamines may be administered to students, only if parental permission has been provided and is supplied by the parents. Student's medication, such as Ventolin, will be sent on excursions with the class teacher.

Medical Action Plans

In cases where a student is known to suffer from a particular condition, such as epilepsy, allergies, asthma etc, it is essential that the parents/guardians complete an action plan which is available from the College office or a medical practitioner. If a parent/guardian suspects that their child has an allergy, it is encouraged that they visit their family doctor to gain diagnosis and create a plan moving forward.

Once diagnosed, first aid staff MUST be supplied with instructions from the doctor on how best to care for their child. If a child has been diagnosed with a life-threatening allergy, it is VITAL that first aid staff are provided with an emergency medical kit, complete with the doctor's written instructions on how best to deal with any reaction. Parents/guardians are to provide the College with an up to date action plan regarding the child's medical condition. The College requires an Action Management plan from the family doctor to enable the correct procedure to be followed if an asthma attack occurs. Valuable time may be lost in caring for a student if our first aid staff do not have the proper instructions. Parents/guardians must provide the College with a Ventolin spacer and Ventolin. Parents/guardians must provide the College with an EpiPen if the student is anaphylactic.

First Aid and Medication

Infectious/Contagious Diseases

All schools have a responsibility under the Public Health and Wellbeing Regulations 2009 to exclude students with infectious/contagious diseases from school.

Note: The regulations require the parent or guardian to inform the College as soon as practicable if the child is infected with any of the diseases listed in the table below or has been in contact with an infected person. It should be noted that in cases of diphtheria, typhoid and paratyphoid fever, exclusion and determination of recovery would be matters for the municipal medical officer of health.

It should be noted that during outbreaks of diseases described in the table below, Principals are to direct parents of students who are not immunised to keep their children at home for the recommended period.

Parents/guardians are asked to inform the College if their child is suffering from an infectious/contagious disease.

The following are some guidelines regarding infectious/contagious diseases:

Disease or condition	Exclusion from school	Exclusion of contacts
Chickenpox	Until fully recovered or at least one week after the eruption first appears	Not excluded
Conjunctivitis (acute infectious)	Until discharge from eyes has ceased	Not excluded
COVID-19	It is recommended that students who test positive stay home for 5 days.	Following the Education Department Recommendation
Giardiasis (Diarrhoea)	Until diarrhoea ceases	Not excluded
Hepatitis B	Until recovered from acute attack	Not excluded
Impetigo (schools sores)	Until sores have fully healed. The child may be allowed to return provided that appropriate treatment has commenced and the sores on exposed surfaces such as scalp, face, hands, and legs are properly covered with occlusive dressings	Not excluded
Measles	Until at least five days from the appearance of rash or until receipt of a medical certificate of recovery from infection	Non-immunised contacts must be excluded for 13 days from the first day of appearance of rash in the last case unless immunised within 72 hours of first contact.
Mumps	Until fully recovered	Not excluded
Ringworm	Until appropriate treatment has commenced	Not excluded
Rotavirus (diarrhoea)	Until diarrhoea ceases	Not excluded
Rubella	Until fully recovered or at least five days after onset of rash	Not excluded
Scabies	Until appropriate treatment has commenced	Not excluded
Streptococcal Infection (incl. scarlet fever)	Until receipt of medical certificate of recovery from infection	Not excluded

First Aid and Medication

Immunisation Status

We are required by law to obtain information about the status of a child's immunisation. This does not mean all students must be immunised, but the College does need to know if the child has been immunised or not. A current immunisation status certificate MUST be submitted to the College on confirmation of a child's enrolment, regardless of the child's immunisation status. If a child's immunisation status certificate is not supplied, the student may be asked to not to attend school until their immunisation status can be confirmed. A copy of a child's immunisation record can be obtained from the Australian childhood immunisation register or from Medicare.

In the event of a disease outbreak, the students that are not immunised can be quickly identified via the immunisation status certificate and excluded from attending school until the risk of infection has passed.

Homeopathic treatment is not a legally recognised form of immunisation and cannot be listed on an immunisation status certificate.

SunSmart

Our SunSmart Policy has been developed to ensure that all students and staff attending Christway College are protected from skin damage caused by the harmful ultraviolet rays of the sun. It is to be implemented throughout the year but with particular emphasis in Terms 1 and 4. During Terms 1 and 4, students are required to wear College approved hats at recess and lunch time. This can also apply to other times when the students are outside for extended periods of time such as Physical Education or sports carnivals. Students are also encouraged to apply sunscreen before coming to school in the morning and re-apply if necessary, throughout the day.

General College Information

College Bus Service

At this stage the College does not have a bus service. As the College grows it is a service they will investigate further.

College Uniform

The uniform promotes pride, belonging and respect in the College. It increases student self-esteem and a sense of belonging. The uniform is attractive, long-wearing and eliminates competitiveness in dress. The wearing of the uniform at Christway College is compulsory

Secondary Girls Uniform	Secondary Boys Uniform	Secondary Sports Uniform
Summer		
<ul style="list-style-type: none"> ▶ Summer dress or grey shorts ▶ White short sleeved cotton shirt with school logo (if wearing grey shorts) ▶ Navy or black sports underpants or fitted shorts ▶ Plain white turn down ankle socks ▶ Black leather, lace-up shoes ▶ Maroon jumper with school logo ▶ Maroon slouch hat ▶ College Blazer 	<ul style="list-style-type: none"> ▶ Grey shorts ▶ White short sleeved cotton shirt with school logo ▶ Navy turn down ankle socks ▶ Black leather lace-up shoes ▶ Maroon jumper with school logo ▶ Maroon slouch hat ▶ College Blazer 	<ul style="list-style-type: none"> ▶ Navy interlock shorts ▶ Navy polo shirt with maroon sleeves school logo ▶ White sports socks ▶ Lace up, sports sneakers (any colour)
Winter		
<ul style="list-style-type: none"> ▶ Check skirt, navy tights or navy knee high socks or grey pants ▶ White long-sleeved shirt ▶ Tie ▶ Black leather lace-up shoes ▶ Maroon jumper with school logo ▶ College Blazer ▶ College wet weather jacket or wind shield jacket 	<ul style="list-style-type: none"> ▶ Grey trousers ▶ White long-sleeved shirt with school logo ▶ Tie ▶ Black leather lace-up shoes ▶ Maroon jumper with school logo ▶ Navy socks ▶ College Blazer ▶ College wet weather jacket or windshield jacket 	<ul style="list-style-type: none"> ▶ Navy tracksuit and jumper with school logo ▶ Navy polo shirt with maroon sleeves and school logo ▶ White sports socks ▶ Lace up, sports sneakers (any colour)

College Uniform

The College Blazer

The College blazer must be worn as the outer garment on the way to and from school, both in the Summer and the Winter. It is worn at assemblies and worship in the mornings.

*On any day where the forecast temperature is 30°C or above, students are not required to wear their blazers.

Seasonal Changes in Uniform

Please note the following regarding seasonal changes in uniform:

- ▶ Terms 1 and 4: Official Summer uniform
- ▶ Terms 2 and 3: Official Winter uniform

**There is a 2-week cross-over at the beginning of Term 2 and 4, where students may wear winter or summer uniform. The students can not wear a mix of uniform, either one or the another, during the crossover period.*

Physical Education Uniforms

All students must wear the College sports uniform as specified when participating in all Physical Education (PE) activities. The sports footwear can be of any colour, however must be appropriate for sport activities.

When a student is representing the College in an external sporting event, the student will be advised and supplied a uniform specified by the College i.e. cricket whites, basketball singlet or netball dress.

Jewellery:	Girls: Watches and plain gold/silver studs or sleeper earrings may be worn Boys: Watches may be worn. No earrings are allowed No other visible jewellery is to be worn with the school uniform
Make-up and Nail Polish:	Make-up or coloured nail polish is not to be worn at school.
Girls' hair:	Shoulder length hair and longer needs to be tied back throughout the school day. Hair accessories are required to be in the college colours of maroon, navy, black and white. Hair needs to be a natural colour (eg. Not pink)
Boys' hair:	Must be neat, tidy and to sit above collar. No extreme styles (eg. Dyed hair, no shaved hair less than a No. 2 blade, 'cut in' sections, longer on one side shorter on the other etc). Hair needs to be a natural colour (eg. Not pink) Students are expected to be clean shaven prior to arriving at school.
Tattoos:	Tattoos are not permitted at the College. Please remove any temporary tattoos prior to attending school.
Hat:	It is compulsory to wear hats in the playground throughout Terms 1 and 4 for sun safety reasons.
Shoes:	Girls: black leather school shoes are the requirement for girls. Boys: may wear black leather school shoes or black boots (NO steel capped toes).
Coat:	Any style of coat in navy is acceptable to and from school. Scarves can be white, navy or maroon.
School Bag:	The Christway College backpack with school emblem and motto is part of the uniform.
Labeling:	All items of clothing needs to be clearly labelled with the child's name. This includes hats, coats, bags, etc.

NB: Nothing worn under the uniform is to be visible either through the fabric or at the neck/arm line.

We appreciate your diligence in maintaining College uniform and we will be advising you if unacceptable uniform items are worn.

At Christway College we like to see students taking care and pride in their appearance. We anticipate that all students will diligently attend to their personal grooming and that uniforms are clean and in good condition worn in the manner intended. We have set down some guidelines that need to be adhered to, to ensure a high standard is met. We do, however, understand that sometimes a situation may arise that will require special consideration. In this case we would appreciate you consulting the Head of Secondary to discuss your special needs. The College expects that every effort is made to ensure that all students are in correct uniform. In cases where a student is out of uniform, a note from their parent/guardian must be provided, explaining the circumstances.

Out of Uniform Events

Students are permitted, on special event days, to wear casual clothes to school. In keeping with the College uniform policy, it is expected that students dress modestly, neatly and suitably to reflect the values of the Christian faith and the College.

The following are unacceptable:

- ▶ Revealing clothing
- ▶ Inappropriate footwear including high heels and thongs
- ▶ Make up and Jewellery
- ▶ Inappropriate language or pictures on clothing
- ▶ Untidy or coloured hair

Approved School Bags

The College school bag is a uniform requirement and no other school or sports bags are permitted.

Swimwear

Girls swimwear must be a one-piece, modest cut of any colour. Boys must wear speedo style or board shorts of any colour. The students are encouraged to wear swimming caps and goggles.

Footwear

Approved Footwear



Not Approved Footwear



Rushfords Schoolwear

The uniform is purchased from Rushford Schoolwear.

1/13 Barnes Pl Werribee VIC 3030 | **Email:** rushfords@noone.com.au | **Phone:** 03 9741 3211 | **Fax:** 03 9741 3155

Business Hours: Monday to Friday 9:00am – 5:00pm | Saturday 9:00am – 1:00pm
Sunday and Public Holidays CLOSED

Key Dates & Contacts

Upcoming Events

2024 Orientation dates	Date	Time
Year 7, 8 & 9 Parent Information Session	24 October 2023	6.30pm – 8pm
Year 7, 8 & 9 New Student Session	24 October 2023	5pm – 7pm
Year 7, 8 & 9 Assessment Session	22 November 2023	9am – 11am
Step-up day (2024 Prep to Year 9)	4 December 2023	9am – 1pm

Term Dates

2024 Term Dates	Starting	Ending
Term 1	30 January 2024	28 March 2024
Good Friday	29 March 2024	
Easter	31 March 2024	
Term 2	16 April 2024	28 June 2024
ANZAC Day	25 April 2024	
King's Birthday	7 June 2024	
Term 3	17 July 2024	20 September 2024
Student free days	15 & 16 July and 30 August 2024	
Term 4	7 October 2024	6 December 2024
Mid-term break	4 November 2024	
Melbourne Cup	5 November 2024	

Key College Contacts

- ▶ Executive Principal Mr Damian Higgins
- ▶ Head of Campus (Wyndham) Ms Kerrie Neophytou
- ▶ Head of Campus (Heatherton) Mr Jason Burgess
- ▶ Head of Secondary Mr Steve Sobey
- ▶ Head of Primary Miss Courtney Hutton
- ▶ Head of Student Wellbeing Mr Cas Gemoh
- ▶ Head of Learning Support Mrs Liz Parker
- ▶ PA to Head of Campus (Wyndham) Mrs Rebecca McFarlane

Contact Information

- ▶ (03) 8740 4770
- ▶ office@wyndhamcc.vic.edu.au
- ▶ 418-438 Ballan Rd, Wyndham Vale, Victoria 3024



Christway
College